



Folinn Electric

product marketing

Sales Director
Max Li



CONTENTS



01

02

03

04

About Us

print the presentation and make it
into a film a wider field

Low-voltage inverter Solutions and applications

print the presentation and make it
into a film a wider field

Service

print the presentation and make it
into a film a wider field

A hand is shown in the upper right corner, moving a white chess king piece on a chessboard. The chessboard is in the foreground, with various pieces visible. A teal horizontal band is overlaid across the middle of the image. On the left side of this band, there is a circular graphic with a teal center and white borders. The text 'Part 01' is written in white on the teal center. On the right side of the teal band, the text 'About Us' is written in a large, white, outlined font. Below 'About Us', there is a smaller line of white text: 'The user can demonstrate on a projector or computer, or presentation and make it film to be used in a wider field'.

Part 01

About Us

The user can demonstrate on a projector or computer, or presentation and make it film to be used in a wider field

1994

The first Folinn inverter was R&D and manufactured in China . Folinn frequency inverte won the invention award in same year. Folinn Electric was founded.

2013

Folinn Electric combine Folinn inverter , FUREEN servo and B&B power units to form a joint venture, New Folinn Electric Group

About us



ABOUT US

Zhejiang New Folinn Electric Co., Ltd., referred to as Folinn Electric, was founded in 1994. It is located in Wenling, Zhejiang, a young city on the coastline of China and a famous advanced manufacturing base in the Yangtze River Delta. The company focuses on inverter manufacturing, and its market share has always been in the forefront of the industry. It is one of the few professional inverter manufacturers in China that integrates R & D, production and sales.

The company has 270 patented technologies and 21 software copyrights; the total construction area of its own workshop is 35,000 square meters. Three major R & D centers have been established in Taizhou, Hangzhou and Germany. The sales network and after-sales service agencies have been distributed in major provinces, cities and autonomous regions in the country, and are exported to Europe, America, Southeast Asia, the Middle East and other countries. After nearly 20 years of leaping development, it has been rated as the "Top Ten Domestic Low-Voltage Frequency Converter Brands" and "Zhejiang High-tech Enterprise" for many consecutive years.

Folinn Electric always adheres to the service concept of quality first, customer first, relying on the advantages of technology research and development and marketing channels, actively broadening the product line, continuously improving the core competitiveness of products in the market, and providing power, new energy, machinery manufacturing and other industries. High-quality electrical products and personalized solutions.

Drive whatever you want to create a better future!

35,000m²

Gross floor area

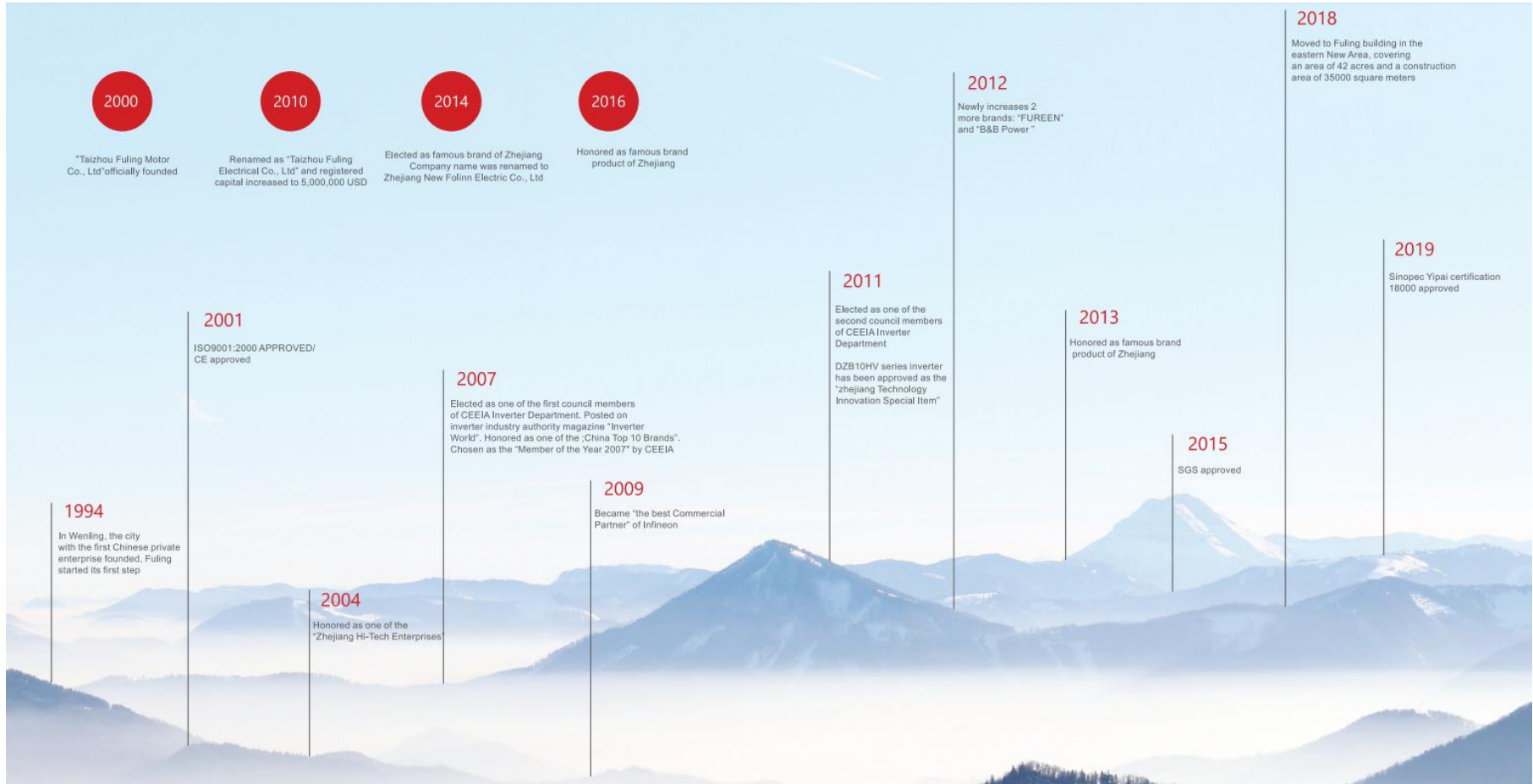
20 Years

Professional inverter manufacturing

26 Years

Electrical transmission research

Company history

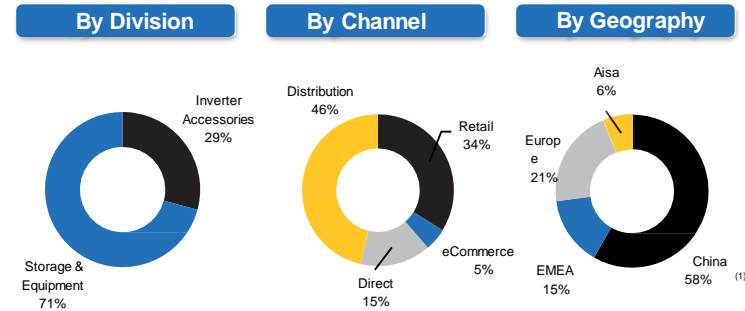


Business description

- A leading global provider of high performance for industrial, professional drive products for automatic industrial and consumer users
 - for mechanics and for the construction trades
 - accessories for industrial customers used in assembly, maintenance and R&D environments
- Headquartered in Zhejiang, China, with ~500 employees
- Large and diverse end-markets including automotive, aerospace, mining, energy, rail and general industry
- manufacturing facilities in the Zhejiang, China, with best cost and efficient supply chain profiles
- Highly recognized and proprietary industrial and professional brands sold direct and through distribution

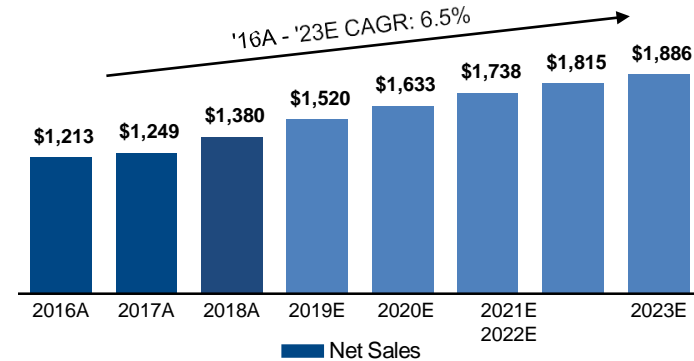


2018A Net sales breakdown



Summary financials

(\$ in millions)



Domestic center



Wenling production Center

Covers an area of 35,000 square meters and integrated plant with completely own property rights, Including production, research and development, technology, finance, administration, personnel, procurement, warehousing and others.



Hangzhou Business center for global business

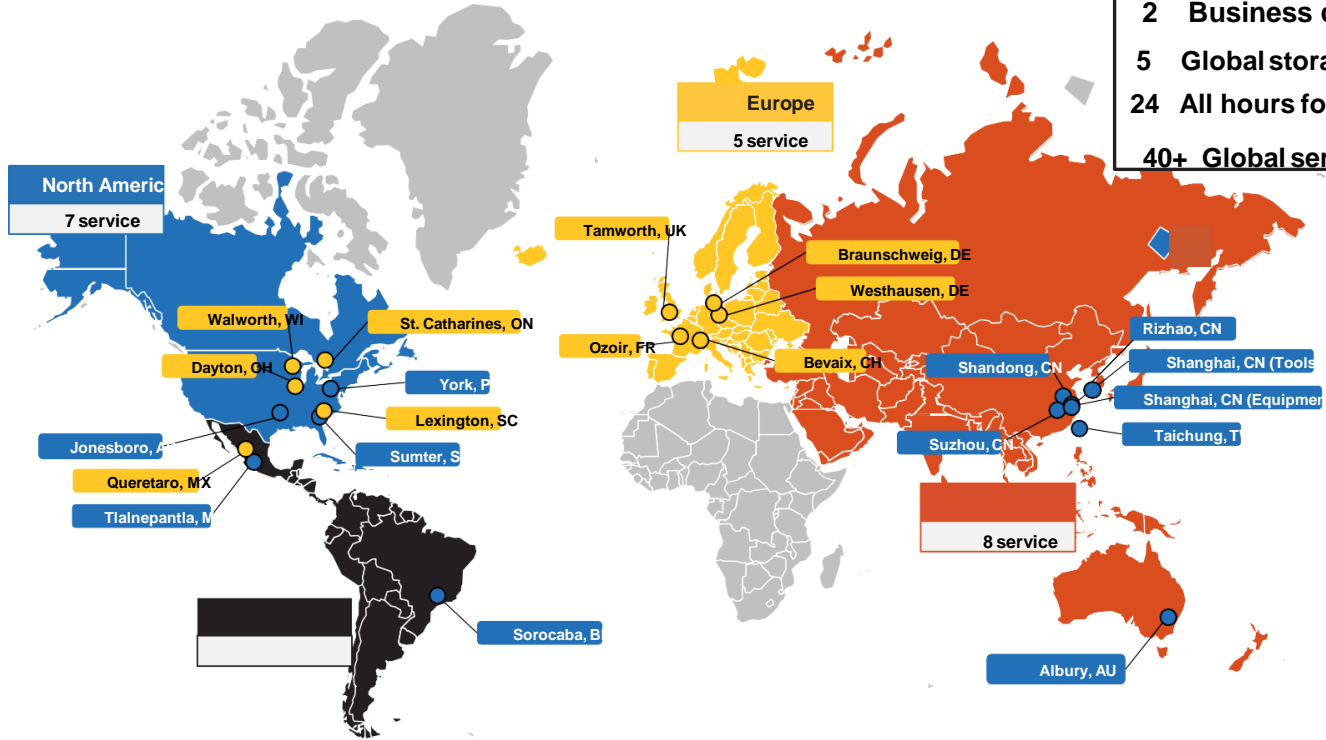
Hangzhou Business center for global business



Global service ssystem



- Additional Key Facts**
- 1 Design and Innovation Centers in China.
 - 2 Business center
 - 5 Global storage center
 - 24 All hours for service
 - 40+ Global service center



we has an extensive and efficient supply chain to serve global and regional customers

Our Core Values

CUSTOMERS COME FIRST



Our first priority is exceeding customer expectations for quality, delivery, value, and innovation.

INTEGRITY IN ALL WE DO



Building strong relationships with co-workers, customers, and communities.

CONTINUOUS IMPROVEMENT



Implement and sustain safe, lean processes to drive out waste and improve productivity.

INNOVATION FOR GROWTH



Creative ideas implemented with speed keep us ahead.

BEST TALENT – ONE TEAM



High performing, entrepreneurial associates who know how to win as a team – the Folinn team.

R&D core team



Global R&D team



Refined R & D

Our certificate



Production workshop



Intelligent
production
workshop



Service team



24/7 technical service team ,giev the technical support immmediately

Shipment system



Sufficient safety stocks to form a comprehensive three-dimensional transportation network of land, sea and airplane.

Global exhibition



Domestic exhibition



Fureen servo exhibition





Part 02

Folinn Low Voltage Inverter

The user can demonstrate on a projector or computer, or presentation and make it film to be used in a wider field

Inverter Product line



Medium voltage VFD



Spindle motor



Servo Drive



Low voltage VFD

Products and production capacity

Main products :

- 10KV high voltage inverter
- 6KV high voltage inverter
- 3KV Medium Voltage Inverter
- 380V low voltage universal inverter

Company production capacity :

- 1、 Monthly output: more than 12,000 low-voltage inverters 220V/380V/690V:
0.75KW-1000KW
- 2、 Annual output: more than 300 high-voltage inverters (3KV/6KV/10KV:
280KW-16000KW)

General frequency inverter family



Low rated power VFD



BD600 series VFD



BD600 Series High Performance Vector AC Drive


BD600 series is latest version for high functional vector AC drive. Multiple control modes and new speed sensorless vector control (SVC) algorithm can achieve stability at low speed. Stronger load capacity at low frequency, support SVC torque control and multiple PG cards, it can realize close loop control of asynchronous motor. Stronger functions, functional of motor control has clearly raised.



- CNC, packaging machinery, wire drawing machine, elevator door-motor
- All kinds of fans and pumping load
- Water extractor, centrifuge, injection molding machine
- Paper manufacturing machinery, lifting machinery, hoist

Label for BD600

- Inverter nameplate:

MODEL: BD600-3R7G/5R5P- 4	Specification and model
INPUT: 3PH 380V 50/60Hz	Input
OUTPUT: 3PH 0~380V 0~600Hz	Output
POWER: 3.7/5.5KW 8.5/13A	Power
S / N: 	Bar code
01B3413A115251001	Serial number
ZHEJIANG NEW FOLINN ELECTRIC CO.,LTD	

- Specifications and models:

BD600 - 3R7G/5R5P - 4 - XX

- BD600 - 3R7G/5R5P - 4 - XX
- 3R7G/5R5P - 4 - XX
- 4 - XX
- XX

Technology version
Input voltage classes:
2:220V 4:380V
6:660V 7:1140V
Specifications and models:
Heavy load 3.7kW , Light load 5.5kW
Serial code:BD600 Series



High power

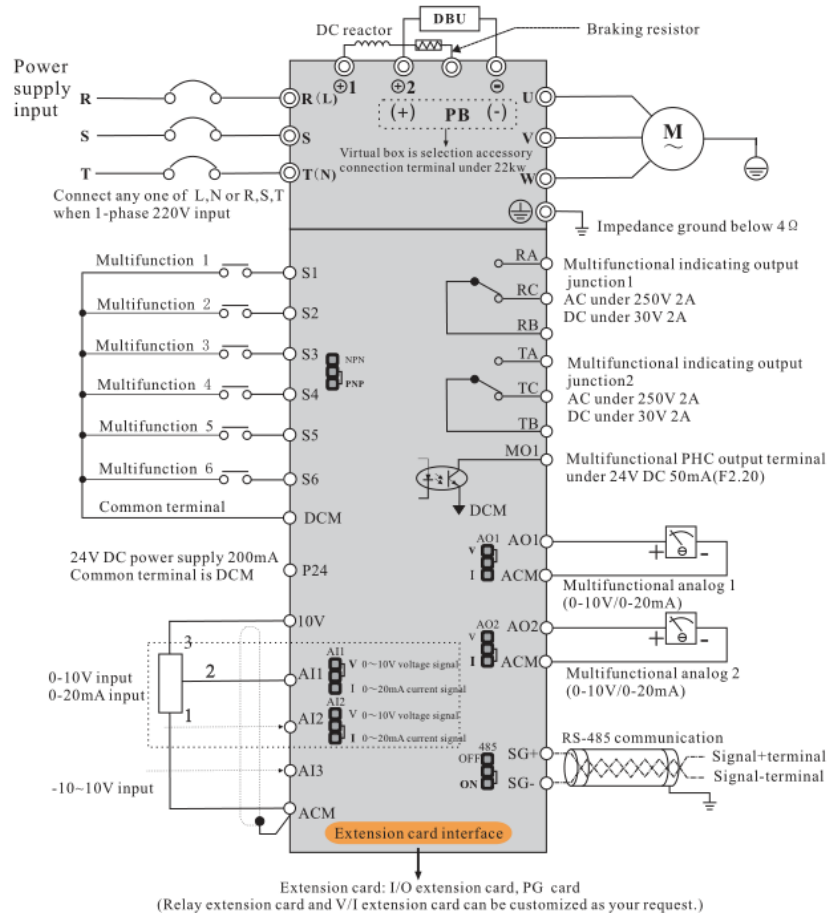


Voltage :380V/660V/1120V

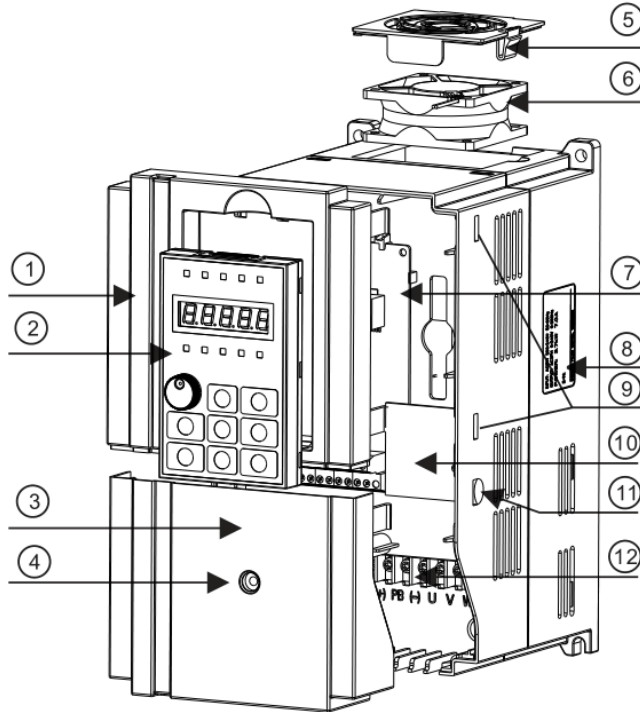
Rated power :from 0.75Kw to 1000Kw

Basic wiring diagram

- ⊙ Main circuit terminal
- Control circuit terminal



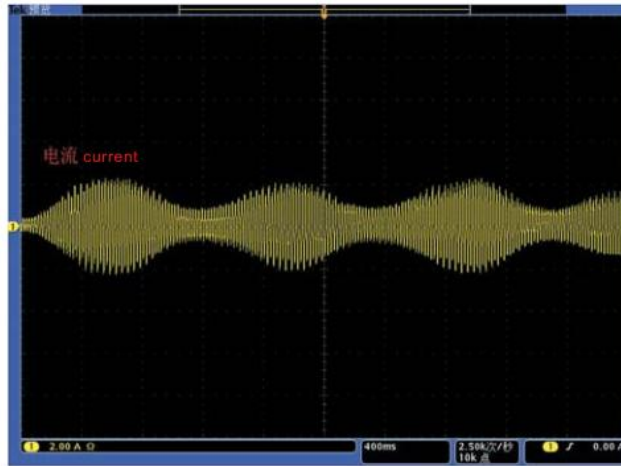
Keyboard



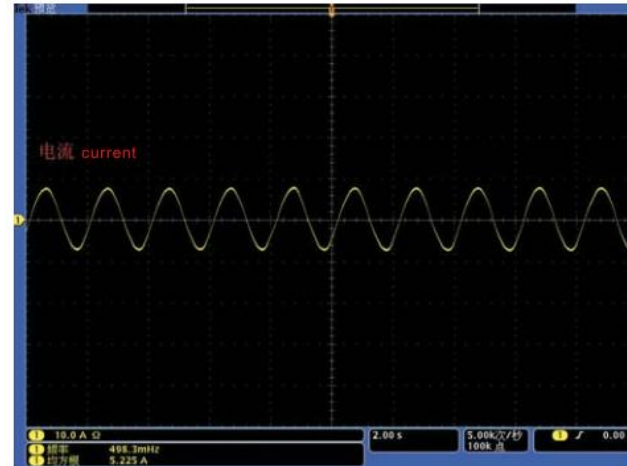
No.	Name	Description
①	Pre-cover	Used for install display keyboard and protect components
②	Keyboard	Used for amend and check inverter parameters, operation and other functions
③	Tail-hood	
④	Retaining screw of tail-hood	Used to fix tail-hood, and loosen this screw first while disassembly
⑤	Snap joint of fan	Used to fix fan, convenient to disassembly
⑥	Cooling fan	Internal heat dissipation of inverter
⑦	Control board	CPU board of inverter
⑧	Nameplate	
⑨	Snap joint of pre-cover	Used to fix pre-cover, total four on both left and right
⑩	Expansion board	Built-in multifunctional expansion board
⑪	Snap joint of tail-hood	Used to fix tail-hood, one on both left and right
⑫	Main loop terminal	

▶ Outstanding performance

- 1) Large torque output when low frequency ;
- 2) Fast dynamic response ;
- 3) Super strong overload capacity



0.5Hz full-load output



50Hz sudden load

▶ Accurate motor parameter self learning

BD600 series inverter can accurately provide dynamic or static self-learning of motor parameters, simple debugging , easy operating, higher control accuracy and response speed.

Dynamic self-learning	Static self-learning
It need release the load, suitable for situation that requiring high control precision	Applicable to the motor and load cannot release

Support multiple control mode

Speed sensorless vector control (SVC), sensor vector control (VC), V/F control



Differential Encoder



Resolver

Flexible and practical analog input/output

Each analog input (AI1 ~ AI3) can set 4 point curves.

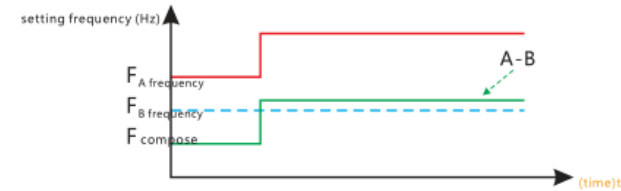
High-speed pulse input and output functions

High speed pulse signal specification: voltage range 9V~26V, frequency range 0 ~ 100 KHZ. Can setting 2 pint curves, high control precision. HDI/HDO high speed pulse input/output terminal can be used for DI/DO.

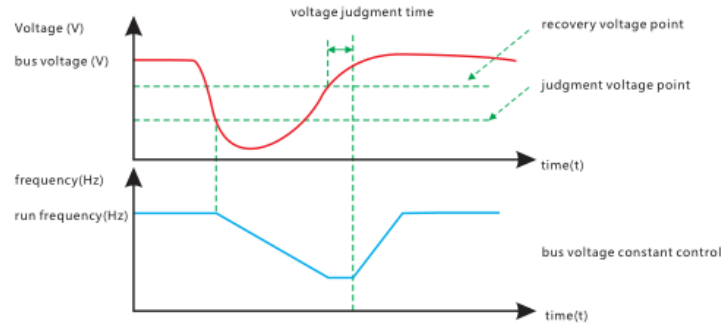
Frequency source binding & compose

Run command source are free to bind any frequency source. 10 kinds of main-auxiliary frequency source, flexible to adjust and compose.

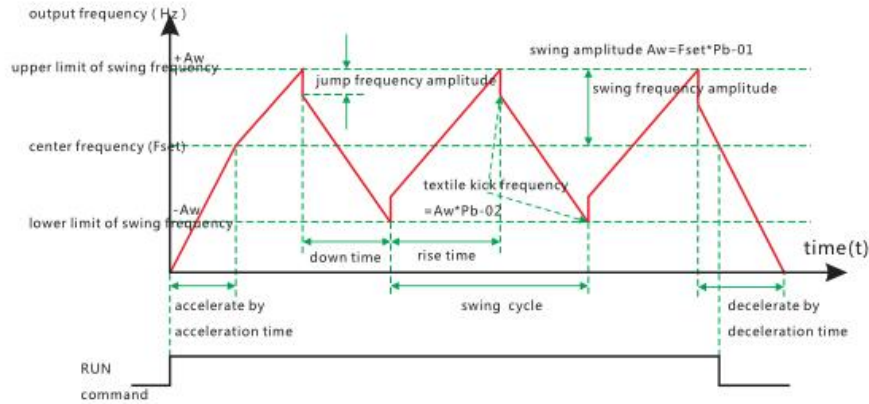
For example : A+B、A-B、AB switch, etc



None-stop when instantaneous power off



▶ Swing frequency control function



▶ Simple PLC

▶ Multiple motor switch

Two groups of motor parameters, and control two motors by one inverter.



FS50L Series VFD



FS50L Series Synchronous Servo Drive

FS50L series high functional synchronous servo drive is specially for speed and torque control of three phase AC permanent magnet synchronous motor, it can open loop vector control without encoder



APPLICATION



- CNC workshop, textile machinery, chemical plant

H1 series inverter introduction



1、 Product development background

Lower cost performance:

all the extra terminals on the client side cannot be used enough, but you have to pay for it .

Insufficient compatibility:

the inverter purchased by the customer can only be applied to synchronous or asynchronous motors;

The parameters are cumbersome:

the manual parameters are cumbersome and even up to thousands of parameters. Customers need to find them one by one when using the parameters themselves. Very skilled senior engineers and R&D engineers can't apply them well on the customer site;

Solve industry problems

H1 series VFD

2. H1 VFD overview

Folinn Electric is an industrial control company with more than 20 years of experience in R&D, production and sales of inverters. Low-voltage inverter products have successively DZB, BD330, BD600 and other products, and the current products have evolved to the existing H1 series of compact inverters. Mass production has been achieved from 0.75KW-37KW, and by the end of November this year, more than 30,000 units have been applied to customer sites. It is expected that the 45KW-132KW mid-power inverter will be launched and mass production will be realized at the end of March next year.



Product appearance introduction



Easy detachable fan design
easy to replace, easy to clean, long life



Function Card
Press to remove it easily and can replace it with customized function card

⚠️ Plug and unplug with power is strictly prohibited



Abundant display
LED keypad, LCD keypad



External operation panel
parameter copy, fault diagnosis, operation optimization, cloud connection



Independent air duct
Reliable heat dissipation high protection level



Customized terminal
Customization cost rationalization according to industry characteristics and customer demands



European terminal
no need special tools, easy connection, save time

3, The multi-function of H1



One machine has multiple purposes:

This product has various control methods such as V/F control, speed sensorless vector control, etc. It is suitable for asynchronous motors, permanent magnet synchronous motors and single-phase motors.

4, The sufficient of H1

The H1 series inverter panel deeply combines the functional needs of various industries. Different panels have different functional terminals to meet some specific industry applications. Therefore, customers choose multi-function panels with different configurations according to their own needs. Users do not need to pay for redundant function terminals. At the same time, the main circuit terminals, modules, capacitors and other main circuit components are adequately used and refined to ensure product quality and reliability.



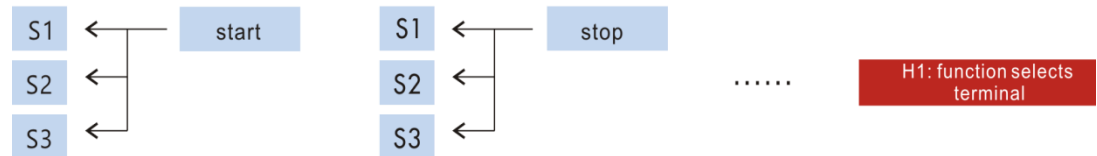
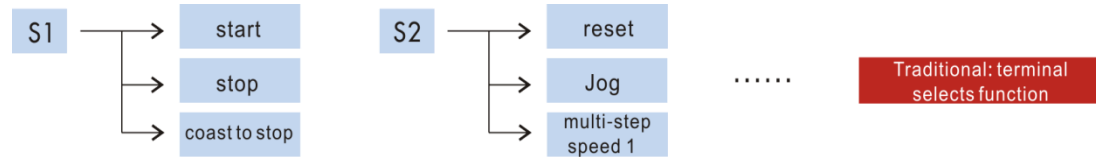
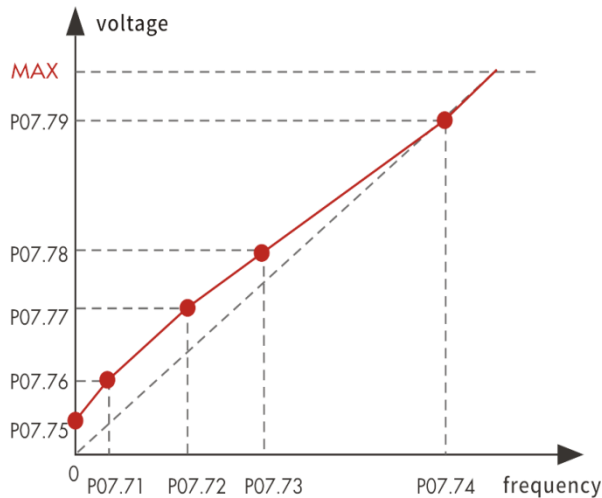
Such as: European terminal

5, The easy to use of H1

H1 series inverters have super self-adaptive ability, and have a variety of industry application macro parameters. Built-in powerful and flexible terminal setting function and built-in PLC function can meet most industry applications.

The special algorithm using adaptive vector control technology ensures the convenience of VF.

Simple to use: select the source of the terminal according to the required function, saving the number and type of the terminal.



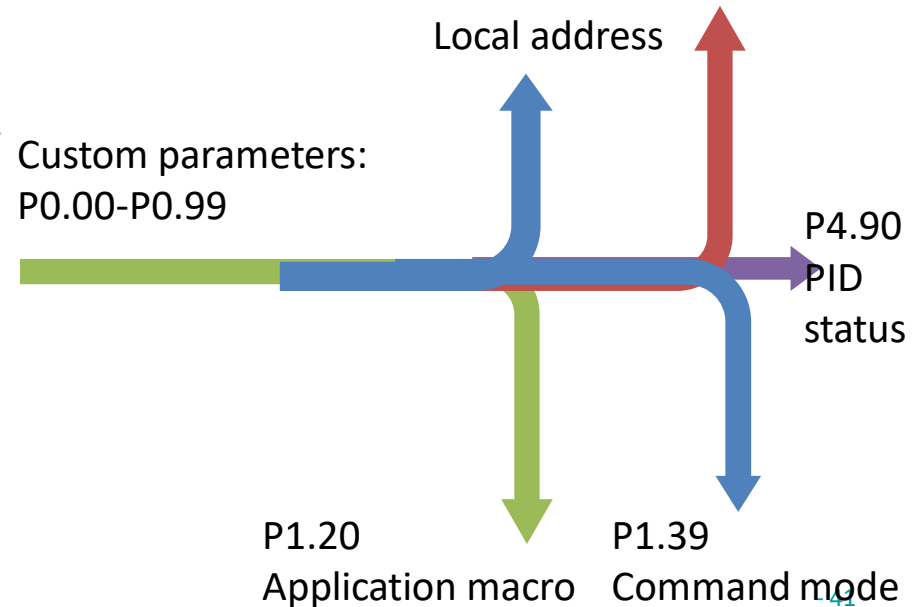
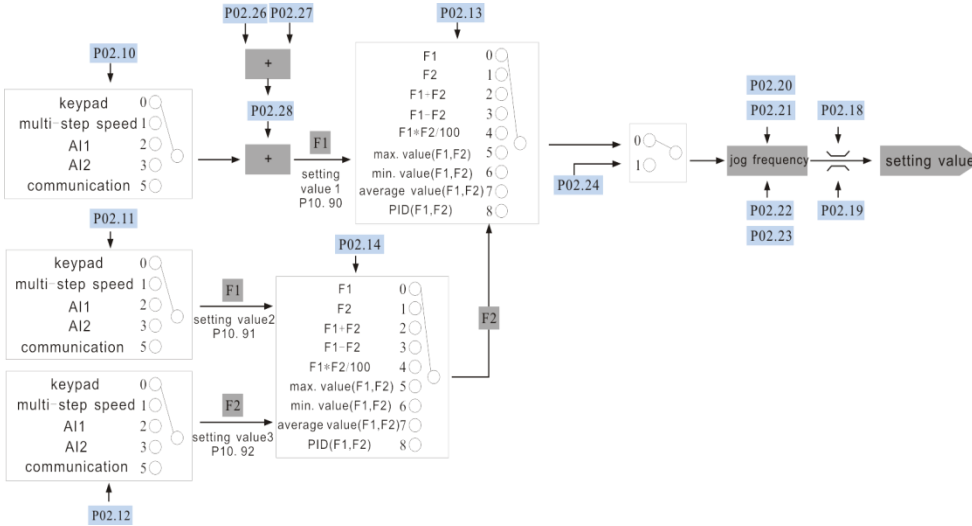
5, The easy to use of H1

Flexible function:

The setting value and command combination are flexible, and it can be easily matched with different applications.

Quick parameter setting function:

Custom parameters P0.00-P0.99 total 100 parameters. Customers can set corresponding parameters according to their common parameters and habits to realize the custom function of parameters.



5, The easy to use of H1



Custom M key function and indicator function

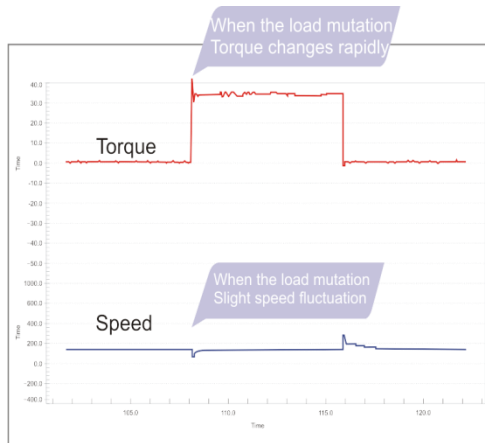
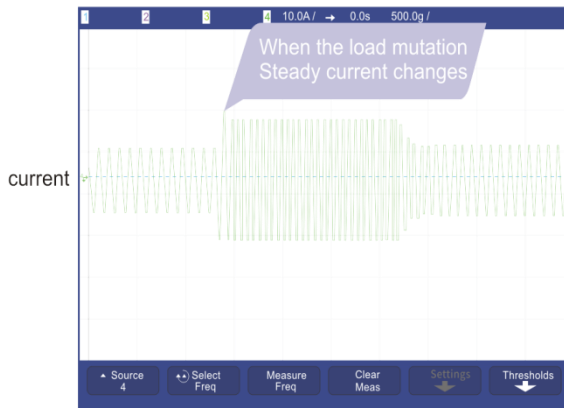
6、 H1 performance characteristics

High carrier frequency:
Maximum 16KHz, motor work is quieter

H1 series inverter can adapt to 80% of most standard motors on the market in adaptive vector control algorithm.

Fast current control:

High dynamic response speed (15ms), fast starting speed, small speed fluctuation



Wide range vector control:

The frequency range of the non-inductive vector control is up to 1000Hz, which can ensure the high-performance operation of the motor.

The waveform of current, torque and speed when add load suddenly and unload with 2Hz 100% rated load

7、 H1 structure and function characteristics

Picture 1

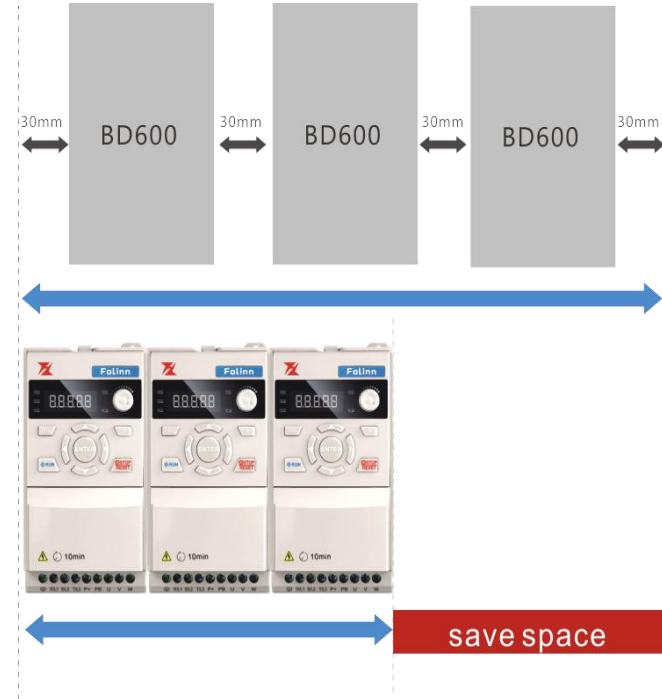
Compared with traditional inverters, the H1 series is smaller in size, saving up to 30% of the installation space and effectively improving the efficiency of space.



Picture 1

Picture 2

Support seamless installation side by side, provide high configuration flexibility and improve installation efficiency.



Picture 2

Compact size and easy installation

7、 H1 structure and function characteristics



Independent air duct:
There is no forced wind
to flow through the
components, which
improves

environmental
adaptability
Driving The Future

Three-in-one keyboard

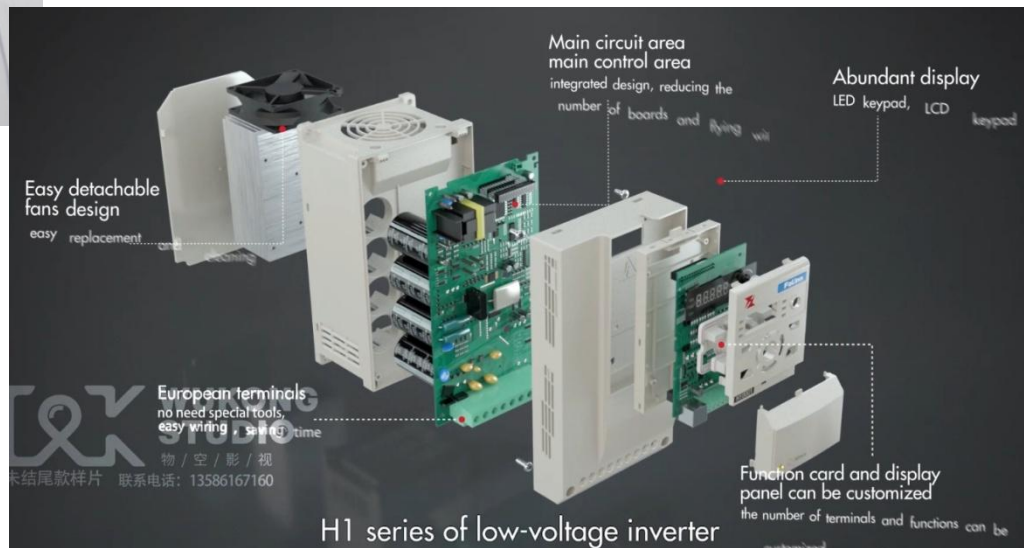


Fast and tight protection:
Short circuit fault,
input/output phase loss,
overload, leakage, etc.,
comprehensively protect
the inverter and motor

H1 series inverter



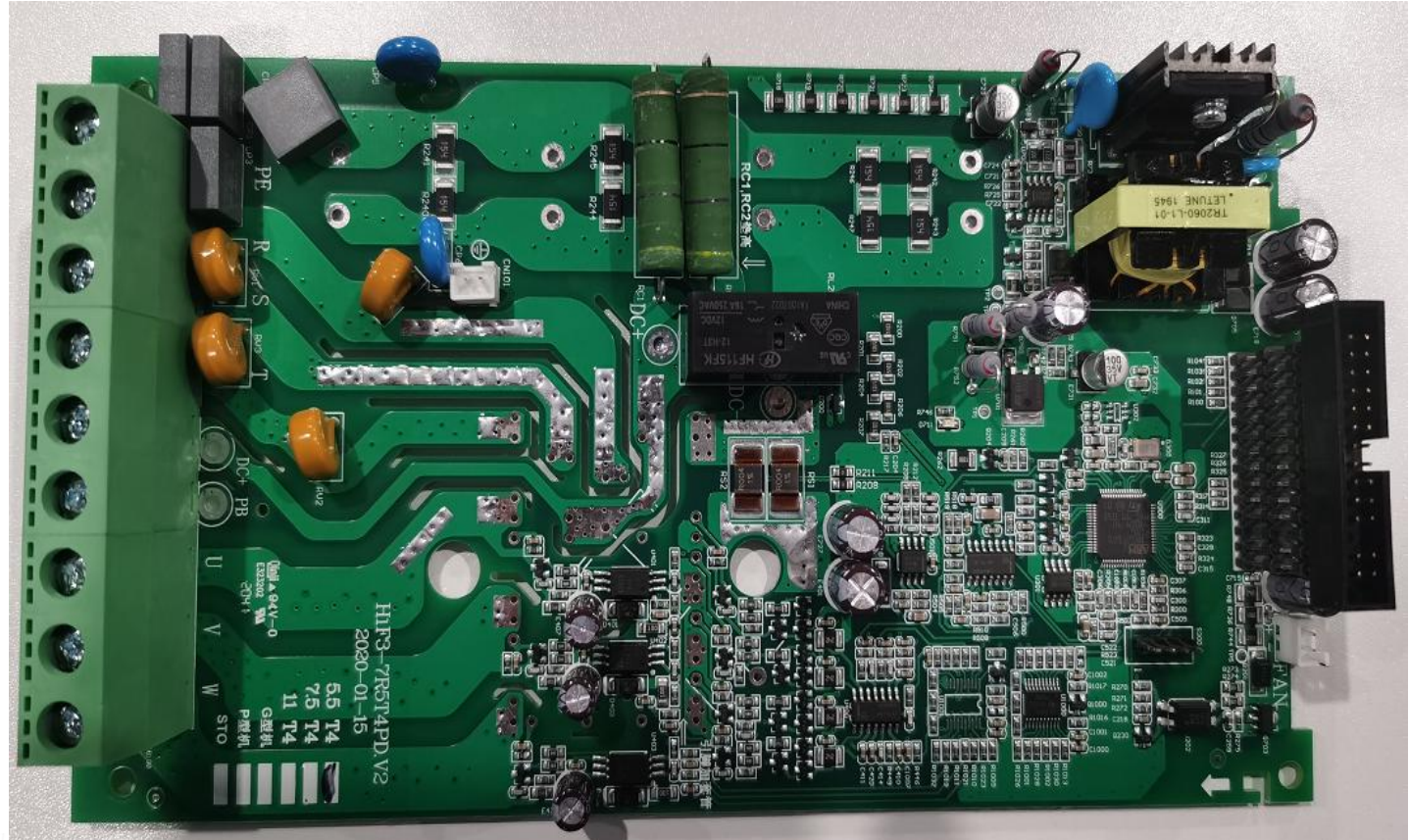
WUKONG STUDIO
物 / 空 / 影 / 视
联系电话: 13586167160



WUKONG STUDIO
物 / 空 / 影 / 视
未结尾款样片 联系电话: 13586167160

8、High stability design

One-piece design:
Reduce the number of boards and jumpers, eliminate potential failure points to the greatest extent, and maximize electrical and EMC performance.



9、Application features



H1 standard function card



Industry customization, high cost performance

10、Application case

01

Air compressor

02

Engraving machine

03

solar pump



Wire cutting

04

Industrial washing machine

05

General industry

06

10、Application case

H0101 function card



Terminal function	Terminal name	Terminal description
10V power supply	+10V	Provide +10V power supply to the outside
Analog input	AI1 (1 way)	0~10V or 0~20mA Select by SW1 jumper
Digital and analog ground terminal	COM	
Digital input terminal	S1~S4 (4 way)	
Reserved	N.C.	
Relay output	RA,RB	Normally open
485 communication port	RJ45	External keyboard or connect to host computer

H0101 is currently the general default standard card for H1 inverters, and has achieved outstanding performance in the general inverter industry.

10、Application case

H0100 function card



SW1
jumper

Terminal function	Terminal name	Terminal description
485 communication port	SG+,SG-	connect to host computer
10V power supply	+10V	Provide +10V power supply to the outside
Analog input	AI1 (one)	0~10V or 0~20mA Select by SW1 jumper
Digital and analog ground terminal	COM	
Digital input terminal	S1~S2 (two)	
Relay output	RA, RB, RC	One normally open, one normally closed

H0100 is currently successfully applied to the H130 screw pump air compressor special machine

10、Application case

H0120 function card



H0120 is currently successfully applied to the dedicated online cutting machine

Terminal function	Terminal name	Terminal description
10V power supply	+10V	Provide +10V power supply to the outside
12V power supply	+EV	Provide +12V power supply to the outside
Analog input	AI1 (1 way)	0~10V or 0~20mA Select by SW1 jumper
Analog output	AO1 (1 way)	0~10V or 0~20mA Select by SW2 jumper
Digital and analog ground terminal	COM	
Digital input terminal	S1~S8 (8 way)	
Digital input terminal & 485 communication terminal	S9~S10 (2 way)	S9, S10 are shared with communication terminals
Relay output Y1	RA1, RB1, RC1	One normally open, one normally closed
Relay output Y2	RA2, RB2	One normally open
Relay output Y3	RA3, RB3	normally open solid state relay

10、Application case

H0110 function card



H0110 is currently successfully applied to industrial washing machines

Driving The Future

Terminal function	Terminal name	Terminal description
10V power supply	+10V	Provide +10V power supply to the outside
Analog input	AI1 (1 way)	0~10V or 0~20mA Select by SW1 jumper
Analog output	AO1 (1 way)	0~10V or 0~20mA Select by SW1 jumper
Analog output	AO2 (1 way)	0~10V or 0~20mA Select by SW1 jumper
Digital and analog ground terminal	COM	
Digital input terminal	S1~S5 (5 way)	
Relay output Y1	RA1, RB1, RC1	One normally open, one normally closed
Relay output Y2	RA2, RB2	One normally open
485 communication terminal	SG+, SG-	There are a total of 485 slave stations, and two master stations cannot be connected at the same time
485 communication network port	RJ45	

10、Application case

H0200 function card



Terminal Function	Terminal Name	Terminal Description
Digital input terminal	S1~S9 (9 way)	
High-speed pulse input terminal	S10 (1 way)	
Digital and analog ground terminal	COM	
External power input terminal	OP	
10V power supply	+10V	Provide +10V power supply to the outside
12V power supply	+EV	Provide +12V power supply to the outside
Analog input 1	A11 (1 way)	0~10V or 0~20mA Select by dial switch, dial down for voltage signal, dial up for current signal
Analog input 2	A12 (1 way)	
Analog current output 1	AO1_I (1 way)	0~20mA
Analog voltage output 1	AO1_V (1 way)	0~10V
Analog current output 2	AO2_I (1 way)	0~20mA
Analog voltage output 2	AO2_V (1 way)	0~10V
Relay output Y1	RA1, RB1	One normally open
Relay output Y2	RA2, RB2	One normally open
Relay output Y3	RA3, RB3, RC3	One normally open, one normally closed
STO1	STI1	

H0200 is used in Europe with higher safety level

10、Application case

H0300 function card

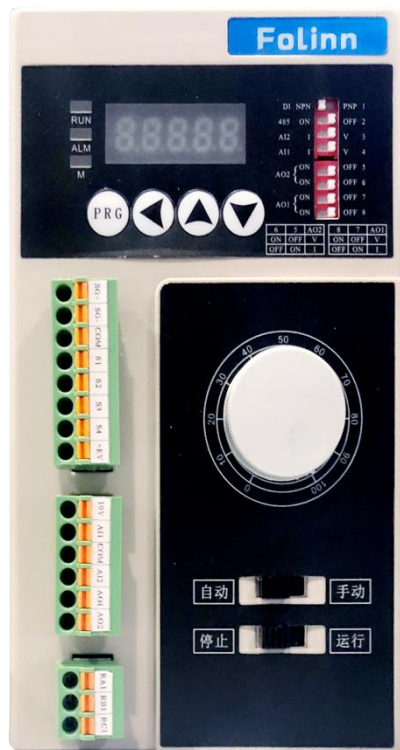


There are no input and output terminals, and it can run after power-on. The panel has only one-key start button.

H0300 panel was successfully applied to the special plane of the photovoltaic water pump industry.

10、Application case

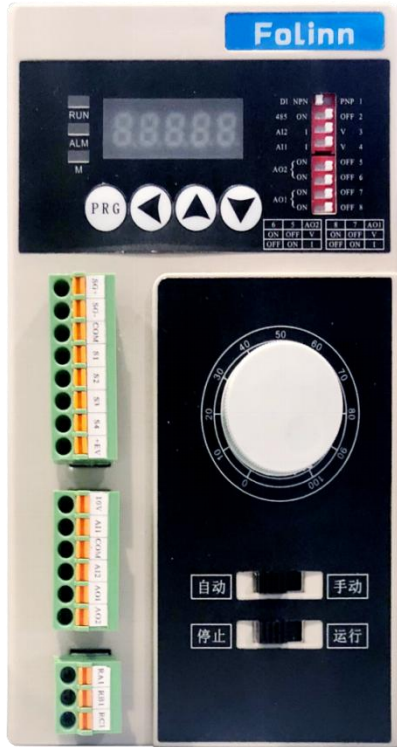
H0310 function card



Terminal function	Terminal name	Terminal description
485 communication terminal	SG+,SG-	connect to host computer
Digital and analog ground terminal	COM	
Digital input terminal	S1~S4 (4 way)	
10V power supply	+10V	Provide +10V power supply to the outside
12V power supply	+EV	Provide +12V power supply to the outside
Analog input 1	AI1 (1 way)	0~10V or 0~20mA Select by dial switch, dial down for voltage signal, dial up for current signal
Analog input 2	AI2 (1 way)	
Analog output 1	AO1 (1 way)	0~10V or 0~20mA Use the AO1 and AO2 dial switches to select left, dial 5 and 7 for current signal, dial 6 and 8 for voltage signal
Analog output 2	AO2 (1 way)	
Relay output 1	RA1,RB1,RC1	One normally open, one normally closed

10、Application case

H0320 function card



Terminal function	Terminal name	Terminal description
485 communication terminal	SG+,SG-	connect to host computer
Digital and analog ground terminal	COM	
Digital input terminal	S1~S5 (5 way)	
10V power supply	+10V	Provide +10V power supply to the outside
Analog input	AI1 (4 way)	0~10V or 0~20mA It is selected by the AI1 and AI2 dial switches, the left is the current signal, the right is the voltage signal
Analog output	AO1 (4 way)	0~10V or 0~20mA
Analog output	AO2 (4 way)	Use the AO1 and AO2 dial switches to select left, dial 5 and 7 for current signal, dial 6 and 8 for voltage signal
Relay output Y1	RA1, RB1, RC1	One normally open, one normally closed

LCD function card



The LCD function card is being moulded, and mass production is expected at the end of March.



- widely used in textile machine, packing machine, carving machine, printing machine, solar water pump, food machinery, woodworking machinery, water pump fan and ceramic machinery, providing better solution



Part 03

Solutions and Applications

The user can demonstrate on a projector or computer, or presentation and make it film to be used in a wider field

H1 series Application



Applicable to asynchronous motor, synchronous motor and single motor

Dedicated Drive

H129 Series Solar Pump Drive

H129 series solar water pump AC drive is a high performance multi-function inverter special for solar pump based on H1 series and BD330-PV. It uses high performance vector control, combined with solar pump application control requirements, can realize excellent PID control function, MPPT function(maximum power point tracking), light weak auto sleep, light intensity auto wake up, under load protection, water shortage alarm, etc. Easy wiring, easy operation.



FEATURE

- Flexible application**
 Adapt for three phase asynchronous motor, three phase synchronous motor, mainstream PV modules
 Can be connect with a variety of styles of water level switch or water level sensor
 Programmable implementation of complex application functions, the application of macros to simplify custom function calls
 Can switch to city electricity
- Cost effective**
 Long duration of water
 Small size, can be installed side-by-side with zero distance
 Built-in motor protection function
 No battery design, adapt for all kinds of application, easy to maintain
- Intelligent and reliable**
 Vector performance, VF inconvenience. Motor parameters insensitive, no need self-learning.
 Advanced motor and pump driving technology, 20 years market application experience.
 Built-in intelligent IGBT module, built-in over-voltage, over-load, over-heat and try rotation protection.
- Remote monitoring**
 Standard RS-485, with optional GPRS module for remote monitoring
 Monitor solar pump system/history parameters anytime and anywhere

APPLICATION



Solar water pump

Dedicated Drive

BD330-PV Series Solar Pump Drive

BD330-PV series solar water pump AC drive is a high functional inverter special for solar pump based on BD330.

It uses high performance vector control, combined with solar pump application control requirements, can realize excellent PID control function, MPPT function(maximum power point tracking), light weak auto sleep, light intensity auto wake up, under load protection, water shortage alarm, etc. Easy wiring, easy operation.



FEATURE

- Cost effective**
 Built-in motor protection function
 No battery design, adapt for all kinds of application, easy to maintain
- Remote monitoring**
 Standard RS-485, with optional GPRS module for remote monitor
 Monitor solar pump system/history parameters anytime and anywhere
- Flexible application**
 Adapt for three phase asynchronous motor, mainstream PV modules
 Can switch to city electricity
- Intelligent and reliable**
 Advanced motor and pump driving technology, 20 years market application experience
 Built-in intelligent IGBT module, built-in over-voltage, over-load, over-heat and dry rotation protection

APPLICATION



Solar water pump

Folinn

Driving the future

Solar pump inverter

BD330-PV SERIES

The BD330-PV series products do not require battery modules, and the power supply is directly sourced from the photovoltaic array to realize PID control and MPPT functions. Based on the original protection functions, the product adds functions such as light-weak sleep, light-intensity wake-up, water shortage alarm, and full water shutdown to ensure the normal operation of the water pump.

- light-weak sleep, light-intensity wake up, water shortage alarm, full water shutdown, high water level automatic stop, low water level automatic operation
- Support photovoltaic DC input and grid AC input CVT or MPPT function
- Application field photovoltaic water pump



Application field Photovoltaic water pump



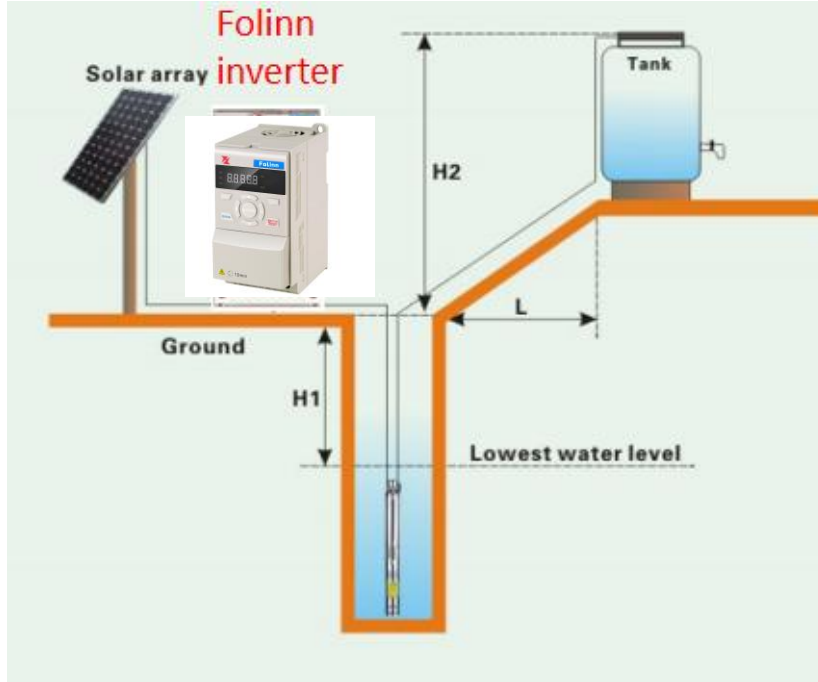
Official website



WeChat public account

Zhejiang Newfuling Electric Co., Ltd.
Address: No. 26, East New District, Wenling City,
Zhejiang Province

H129 solar pump inverter system



Dedicated Drive



DZB312 Series Carving Machine Drive



Application

Woodworking engraving machine, advertising carving machine, stone engraving machine, process engraving machine, cylinder engraving machine, etc.

FEATURE

- Power Range: 0.75KW-11KW
- Adopt independent air dust suitable for dusty occasions
- Unique core algorithm, small external interference
- Output frequency range 0-1000.0Hz
- Automatic torque boost and automatic slip compensation function
- Engraving machine dedicated macro code parameter set before delivery out of factory, convenient for customers to debug

BD331 Series Constant Pressure Water Supply Drive



Application

Constant pressure water supply for urban and rural residential, central heating and water supply for urban

Water treatment, water supply pump station, constant pressure oil system, etc

Production water for industrial and mining enterprises, water circulation, and industrial boiler water supply system, etc.

FEATURE

- A variety of control mode: Support multi pump multi mode control
- Built-in standard 485 communication
- Automatic carrier frequency adjustment, bigger starting torque of motor, high speed running with lower noise
- Timing rotation control, which can effectively prevent rust of pump
- High pressure reach detection, low pressure reach detection, sleep/awake function, lack in water alarm, fire inspection, etc

Dedicated Drive



BD337 Series IP54 Drive

IP54 AC drive is developed specially for the harsh environment such as moisture of splashing, and heavy dust, etc.

The AC drive shell which meets IEC60529(EN60529) and IP54 standard could present dust and the vertical plane with 60° in the rain

FEATURE

- Structure of AC drive is metal shell which used advanced surface dusting spray crafts, delicate color, nice appearance, waterproof paint
- The outward appearance of the AC drive uses metal shell which ensured good cooling
- IP54 fan
- Power range: 2.2kw-500kw

APPLICATION



- Applicable industry: plastic, textiles, printing and dyeing, food, machine tools, powder, ventilation equipment, etc

Customer application



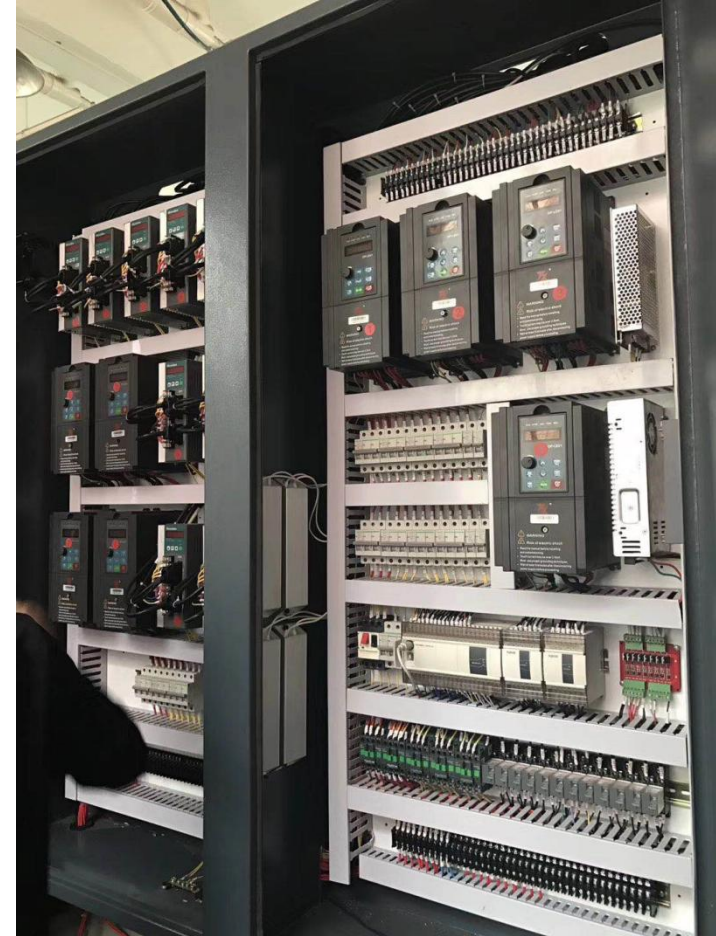
Textile applications



Customer application



Heavy-load application site



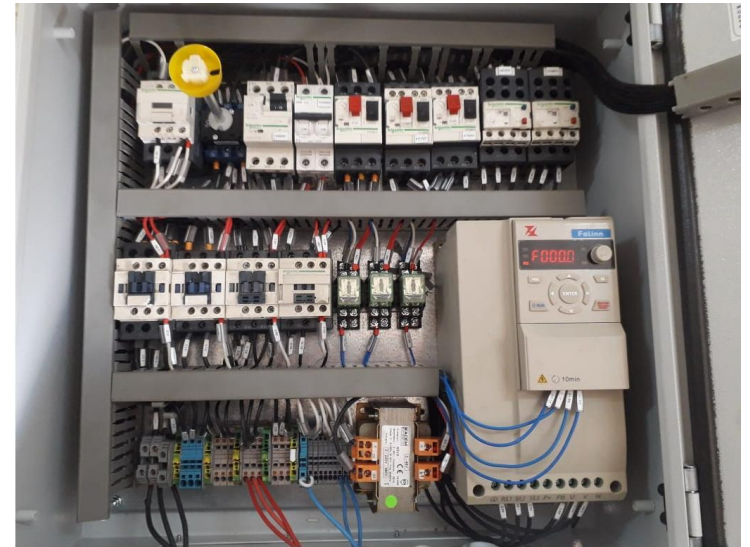
Engraving machine application case



H1 Application on South africa and India



H1 Application



Folinn DZB-70



It still working more than 20 years on customer site to running .

DZB300 Series Vector Control AC Drive



DZB300 series vector type common AC drive has adopted DSP controlling system, completely optimized speed sensor vector controlling, as well as V/F controlling, multiplied in function, smart in application and stable in reliability, capable of using widely for digital machine tool, metal processing, and other industries or equipments, which require highly on speed control, torque response and low frequency output features.

DZB312 Series Engraving Machine Special Inverter



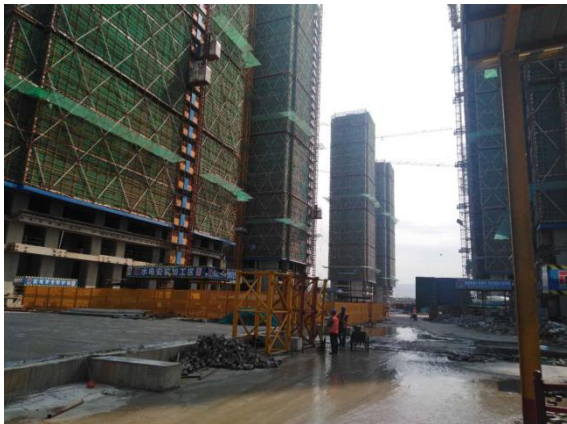
FEATURE

- Supply with multi faults protection over-current, over-voltage, over-heating, phase loss and over load, etc
- 2 ways of speed control modes non-PG vector control(SVC), V/F control mode
- 8-segment simple PLC, multi speed control, and PID control
- Freely programmed for both input and output terminals, the user can form a lot of working modes according to actual need
- Internal set driving unit in AC drive with power between 0.75-15kw, links to driving electronic resistance if fast stop needed
- Support multi frequency setting modes digital setting, analog quantity setting, PID setting, and communication setting
- Starting torque non-PG vector control: 0.5Hz/150% (SVC)
- It has the function of instantaneous power failure without shutdown
- Internal set DC reactor in AC drive with power over 37kw, increases the output side power factor, and whole system efficiency and stability

690V 1400 VFD application



Special VFD for Building machine



BD600 Application



BD600 Application



BD600 Application on 380V 630KW



BD600 Application on 380V 630KW



A hand is shown moving a white chess piece on a board. The background is a blurred image of a chess game. A teal horizontal band is overlaid across the middle of the image. On the left side of this band, there is a circular graphic with a teal center and a white border, containing the text 'Part 04'. On the right side of the band, the word 'Service' is written in a large, white, sans-serif font. Below 'Service', there is a line of smaller white text: 'The user can demonstrate on a projector or computer, or presentation and make it film to be used in a wider field'.

Part 04

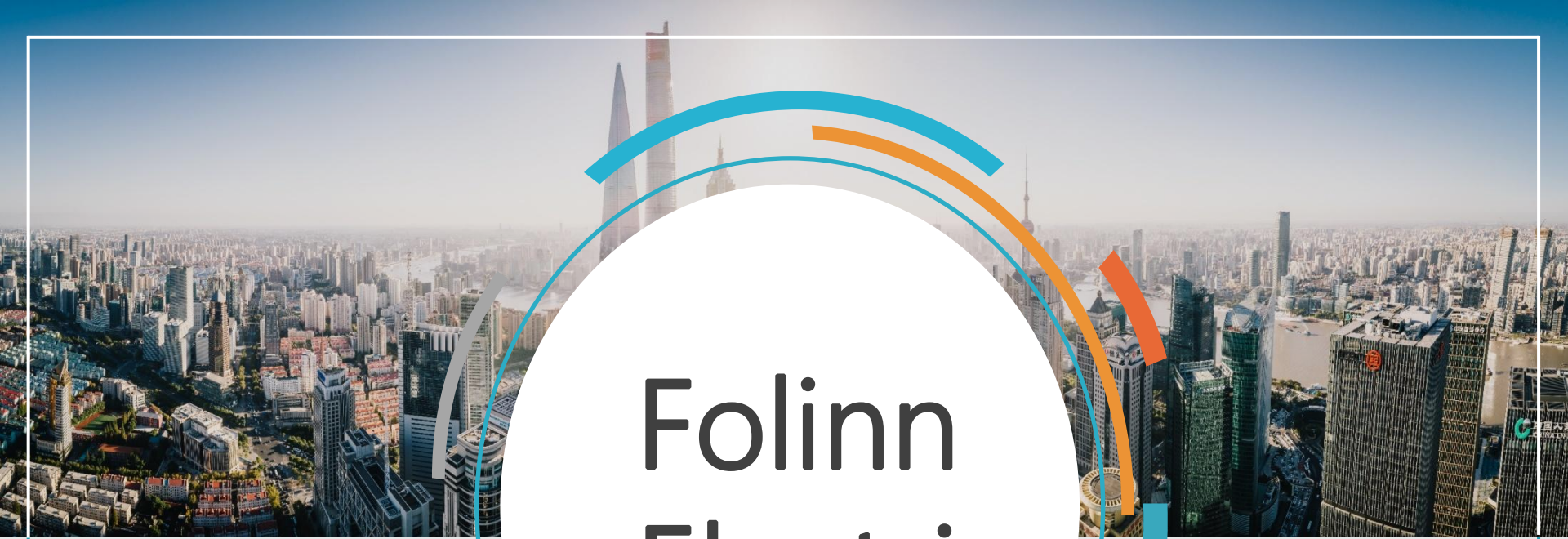
Service

The user can demonstrate on a projector or computer, or presentation and make it film to be used in a wider field

Full service for you

- Made solutions for your system
- Installation and technical support
- Training
- Preventive maintenance agreement
- Professional and fast after-sales service





Folinn Electric

